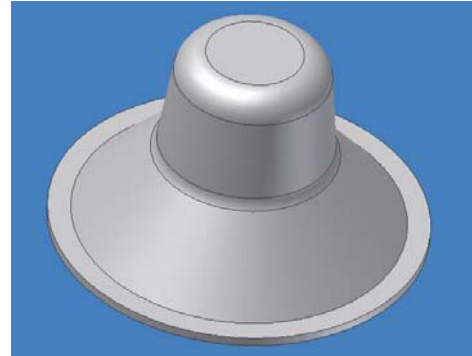




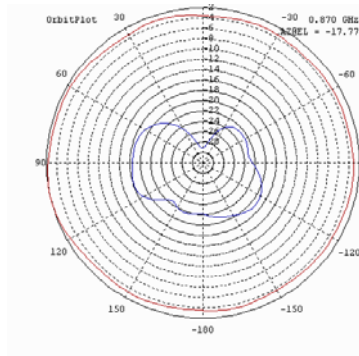
## **SUNNY OMNI DIRECTIONAL CEILING ANTENNA FOR 350-960/1710-2700MHz**

**Model : SUN-ICA-327-2/4**

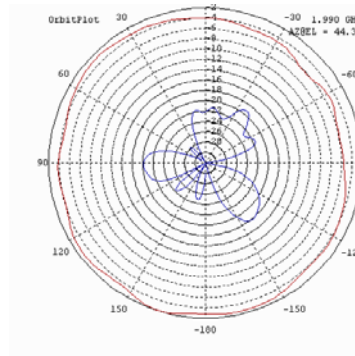
Electrical Data	LOW BAND	HIGH BAND
Frequency (MHz)	350 – 960	1710 – 2700
Gain	2dBi	4dBi
V.S.W.R.	<2.5:1	<2.0:1
Horizontal Beamwidth	360°	360°
Vertical Beamwidth	80°	75°
Elevation Downtilt	2-6°	2-9°
Upper Sidelobe Suppression	>15dB	>16dB
Front-to-Back Ratio	>25dB	>25dB
Power Rating	100W	
Impedance	50W	
Connectors (Back or bottom)	N Female	
Dimensions	Height: 160mm , Dia: 280mm	
Weight (antenna only)	0.8 Kg	



Low Band



High Band



Technical data are subjected to change without notice – File: SUN-ICA-327-2/4\_datasheet 2010V1.0